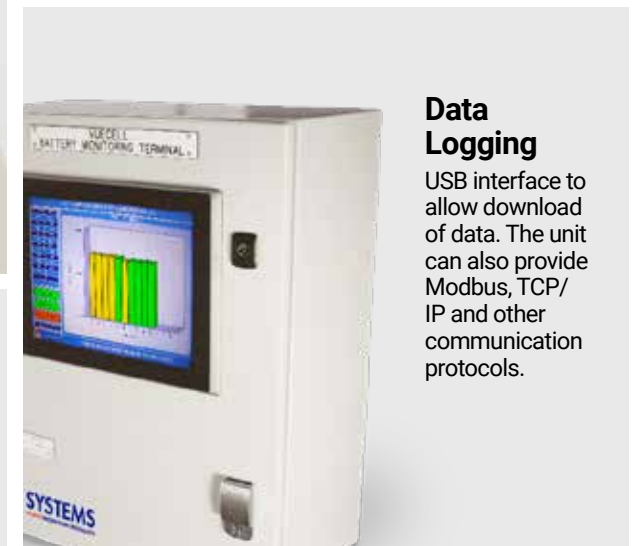
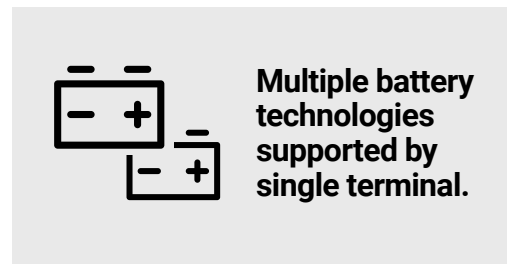
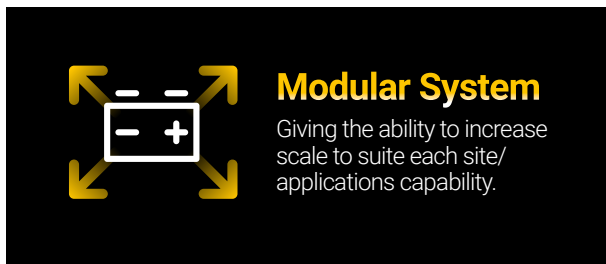
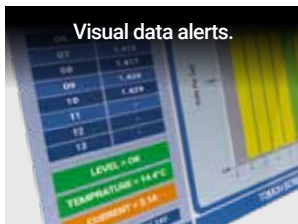
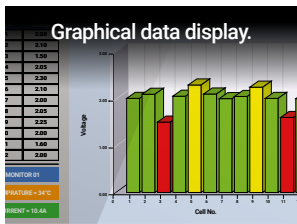
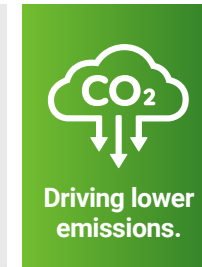
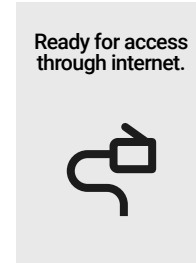
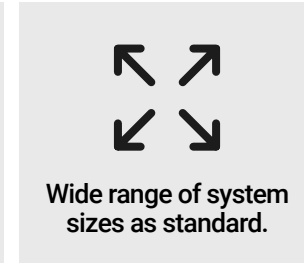
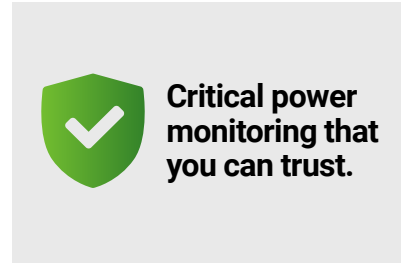


Delivering power, **when you need it.**

# VUECELL™ > monitoring

BATTERY MONITORING EQUIPMENT

Multi-channel real-time comprehensive battery monitoring for critical standby power applications.



The images in this document are for illustration purposes only and may not accurately represent the product.

**POWER REQUIREMENT**

The SBC requires a 230VAC single phase supply or DC. Monitors take power from the battery string to which they are connected (full voltage to avoid creating imbalances).

**LOCAL DISPLAY**

The touchscreen display provides a user interface for the operator allowing access to both the system menus and calibration settings (security setting can be implemented to prevent unauthorised changes to system parameters).

The screen also displays battery information, such as, battery current, battery voltage, battery temperature and where fitted, battery electrolyte levels. Where multiple batteries are connect to the terminal unit, the display will scroll at a predetermined period showing each connected battery in turn. The system terminal display will however, highlight any fault on any given battery connected to the system and will stay static on the faulty battery until the fault has been acknowledged and/or cleared.

For example a combination of graphical representations of a battery, plus numerical values could be presented to most clearly illustrate battery status – all in real time. Coloured backgrounds to numerical data (e.g. green/yellow/red) and/or dedicated areas of the display could be used to highlight potential or actual causes for concern.

**WEB SERVER**

Any data presented on the LCD panel could be accessed via the internet. This would allow battery status to be monitored from anywhere (e.g. at a desk or whilst mobile).

**ADDITIONAL FEATURES**

- Ethernet connection (for local network interfacing).
- RS485 connection (To interface with voltage/ current monitoring devices).
- Web-server addressable (internet connection fitted).  
*Note: This feature is particularly useful for individual applications. However, for clients with multiple sites, it would be better to offer a remote server solution, monitoring several sites, to reduce the loading on the SBC.*
- No hard disk (OS contained on flash memory).
- Works with Nickel Cadmium, Planté Lead acid, Valve Regulated Lead acid and Lithium derivative cells.
- Alarm outputs are available in both Local - (via display unit), Remote - (via volt free contacts, web server - if internet connection fitted) or via CAN bus.
- This unit can be tailored around your site assets to provide full viability of your critical power systems.

For more information about this product and our free system survey, please contact us.

**System**

<b>Operating System Software</b>	IB888-11 Microsoft Windows® 10
<b>CPU</b>	Intel® Celeron based processor 1.8GHz
<b>System Memory</b>	1x DDR2 SO-DIMM, Max. 4Gb
<b>System Chipset</b>	Intel® SCH US15W XL
<b>BIOS</b>	Award
<b>Watchdog Timer</b>	256 levels
<b>SSD</b>	CF Socket
<b>H/W Monitor</b>	Yes
<b>Expansion Slot</b>	1x Mini PCI-E connectors

**Graphics**

<b>VGA Controller</b>	Intel® US15W XL integrated GMA500
<b>VGA Memory</b>	N/A
<b>Display Interface</b>	Support DVI & 24-bit single channel LVDS

**Ethernet**

<b>Controller</b>	Realtek RTL 8111C GbE LAN
<b>Connector</b>	RJ-45 on-board

**Multi Input–Output**

<b>Chipset</b>	Winbond W83627EHG + Fintek 81216DG 1x IDE (UDMA33/66/100), 1x KB, 1x Mouse 3x RS232, 1x RS-232/422/485
<b>USB</b>	2 ports on board Pin header for 4 ports (USB 2.0)
<b>Audio</b>	Intel® SCH US15W XL built-in audio w/ Realtek ALC662 codec for 5.1CH
<b>Others</b>	Digital I/O (4 in, 4 out)

**Mechanical and Environmental**

<b>Dimensions</b>	02mm x 147mm (4" x 5.8")
<b>Max. Power Requirement</b>	TBC
<b>Operating Temperature</b>	0°C – 60°C (32°F – 140°F)
<b>Storage Temperature</b>	-20°C – 80°C (-4°F – 176°F)
<b>Relative Humidity</b>	10% – 90% (non-condensing)

Contact us for a free system survey and learn more about our products.

pe-systems.co.uk/technical

Sales +44 (0)1942 260330

sales@pe-systems.co.uk



For all our QHES Accreditations, please visit the website.